



IG902

Wireless 2D DPM Barcode Scanner

SCANTECH ID[®]
CHAMPTEK Group

Introduction

The IG902 is a high performance wireless industrial handheld high performance 2D DPM barcode scanner. It utilizes advanced CMOS imaging recognition technology and an intelligent image recognition system, equipped with 1.3 million pixel global exposure camera, which effectively handles barcodes with dirt, defects, and low contrast. It is mainly used in DPM barcode scanning in industrial production, machinery manufacturing, PCB production and other scenarios.

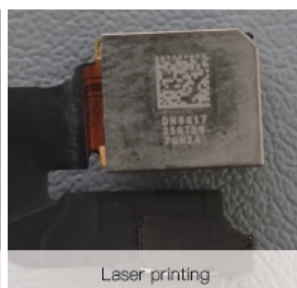
IG902 has most modern design with rugged casing and supports IP65 sealing protection, features enhanced wireless 2.4 G transmission technologies, with an effective range of over 60 meters in open outdoor environments. with its unmatched performance for the majority of 1D and 2D and DPM barcode reading to increase your productivity.

Features

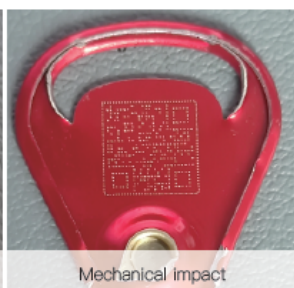
- It is anti-drop and anti-vibration with highly integrated 2D decoding structure.
- Its high-performance MCU to easily identify the mainstream 1D, 2D and DPM barcodes in the market.
- Built in 1.3 megapixel global exposure camera that has excellent performance in reading more than 3mil bar codes and DPM codes, such as plastic, cast iron, PCB, aluminum, with processes such as reflection, low contrast, perforation, distortion, corrosion and impact, drilling DPM, laser printing, mechanical impact, etching and other types of DPM barcode.
- Enhanced wireless 2.4G transmission technology, with a reliable outdoor transmission range of over 60 meters, and supports both wired and wireless transmission without switching.
- Supports synchronous mode (scan and transmit immediately) and storage mode, capable of storing over 20,000 EAN13 product codes.
- Vibration feedback for clearer scanning.



Drilling DPM



Laser printing



Mechanical impact



Etching

