



SK-100

SCAN KIOSK Model 100

SCANTECH ID[®]
CHAMPTEK Group

Introduction

The SK-100 is a multifunction scan kiosk designed for diversified applications in self-service, ID identification, information service, multimedia service, digital signage and your customized interactive applications and services in every environment of retail, transportation, medical care, hospitality and office building. SK-100 is the best self-service kiosk solution with powerful hardware, open platform of Linux or Android, and flexible hardware options in compact body. It comes with security protected web-based management tools allowing easy management from remote. SK-100 brings productivity, efficiency and convenience to your business and service in good price budget.

Technical Feature Keynotes

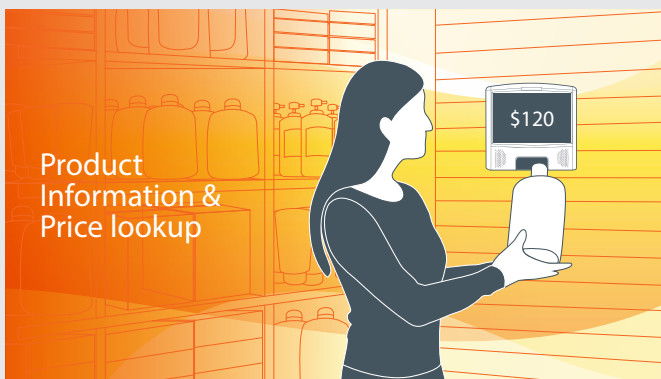
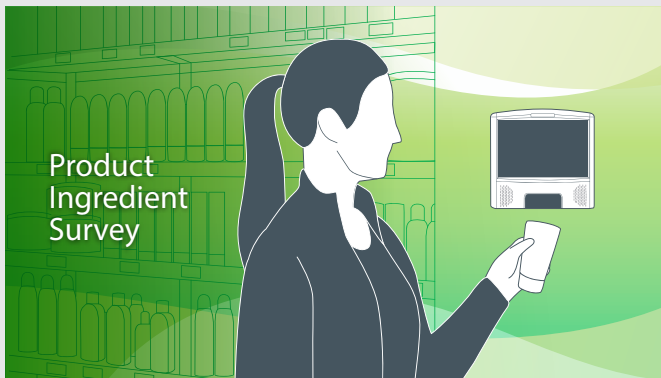
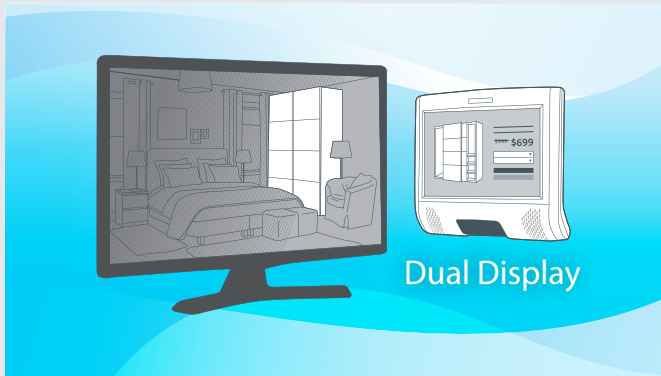
The SK-100 is built with hardware capability of:

- 10.1-inch LCD display with capacitive multitouch screen
- Selection of Linux or Android 6.0 operating system
- LAN and WIFI network connectivity in option
- 2D imager scanner
- Scalable options in PoE, video camera, Bluetooth audio
- Audio and video streaming or playback
- HDMI is available for Dual Screen
- 3 USB ports for peripheral expansion (barcode scanner, smartcard reader, printer, keyboard, mouse, flash disk)

SK-100

Application Keynotes

The SK-100 could be deployed for self-service and interactive applications including and not limited to:



System Specifications

• Processor

ARM Quad-core CPU

• Operating System

Linux 3.4/Android 6.0

• Display

Size	10.1-inch TFT-LCD
Active Area	217x136mm (WxH)
Aspect Ratio	16:10
Resolution	1280x800 pixels
Color	16M colors
Touch Screen	Capacitive type
Multitouch	Yes, up to 5 points (subject to application)

• Data Capture/Output

Barcode Scanner 2D area imager scanner (1D/2D decoding)

• Memory

RAM	1GB / 2GB LPDDR3
Internal Storage	8GB eMMC
External Storage	USB flash disk (not included)

• Network/Interface

Wired LAN	10/100Mb Ethernet 802.3; Power over Ethernet 802.3af (optional)
Wireless LAN(Optional)	802.11b/g/n/ac, 2.4GHz and 5GHz dual band
Encryption Protocol	WPA, PSK and WPA Enterprise security

• Multimedia

Audio Output	Loudspeaker (3Watt) x 2, Bluetooth Audio 2MP
Audio/Video Input	video camera with microphone
Image Format	PNG, JPEG, GIF, BMP
Audio Format	WAV, WMA, MP3
Video Format	MPEG-4, H.264

• Peripheral(I/O Ports)

USB x 3, RS232 x 1, LAN x 1 (for Ethernet or PoE), GPIO x 2, 2 pin output(Exit Gate & Power Gate)(optional)

• Power

DC 12V/2A Power Adapter or Power over Ethernet 802.3af (optional)

• Weight

Approx. 1.25 kg

• Environmental

Operating Temperature	0°C to 40°C (32°F to 72°F)
Storage Temperature	-20°C to 60°C (-4°F to 140°F)
Humidity	up to 95% RH (non-condensing)

• Regulatory

CE, FCC, RoHS

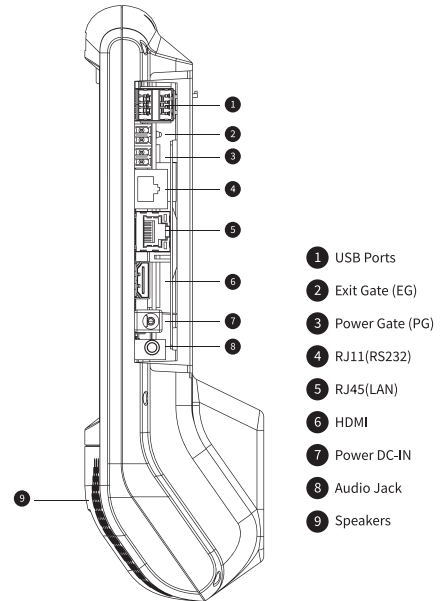
• Accessories

Power Adapter
VESA Mounting Screw Set

• Dimensions

HxWxD 252 x 238.15 x 71.5 mm

System Specifications



• Optional Spec

Internal Storage 16GB	Optional
Access Control(POE+)	Optional
GPIO Ports(EG/PG)	Optional

Camera + Microphone	Included
Dual Stereo Speakers	Included
HDMI Port	Included
Audio Jack	Optional
VESA Mount Bracket(75x75mm)	Optional

Data Capture Specifications

• 2D Area Imager Scanner

Scanner technology	2D area imager scanner for 1D/2D barcode decoding
Light Source	632±5nm Red LED

Resolution	0.127mm/5mil UPC/EAN, 0.26/10mil 2D barcode
Ambient Light	up to 100,000 Lux

Software & Applications

Development Tools	Software Development Kit (SDK)
Management Tools	Web Management, Remote Package Update
Default Applications	Android version: 1D/2D Barcode Scanner, Media Player, Promo Tool, Desktop Configurator, Price Checker Demo App *software availability is subject to different hardware configuration.

The specifications are subject to change without prior notice, for complete details and update-to-date product information please contact your sales representative.